

THE VENTRICLES AND PULMONARY PRESSURES

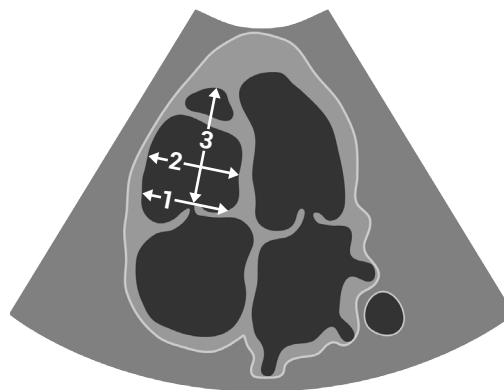
Evaluating right ventricular size and function

Upper limit of normal diameters for the right ventricular (RV) cavity

Basal (RV1)	4.2 cm
Mid (RV2)	3.5 cm
Length (RV3)	8.6 cm

These are used for women and men.

TAPSE <16 mm and tissue Doppler S wave <10 cm/s suggest abnormal right ventricular longitudinal systolic function.



- 1 Basal (RV1)
- 2 Mid (RV2)
- 3 Length (RV3)

References and further reading:

Rudski LG, Lai WW, Afilalo J, et al. 2010. Guidelines for the echocardiographic assessment of the right heart in adults: A report from the American Society of Echocardiography endorsed by the European Association of Echocardiography, a registered branch of the European Society of Cardiology, and the Canadian Society of Echocardiography. *J Am Soc Echocardiogr*. **23**:685–713.